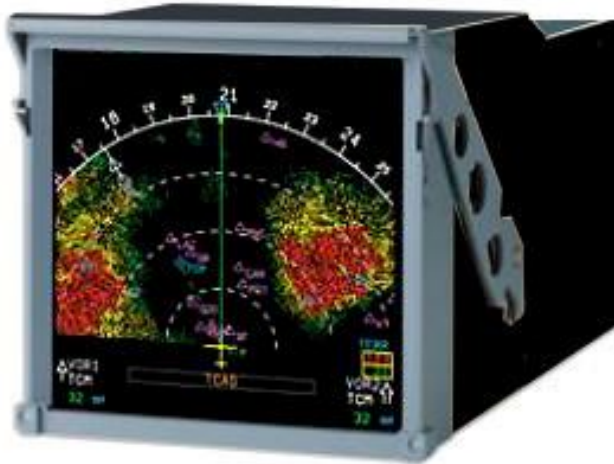


A320/330/340 PFD SIMULATION COLOR DISPLAY

7.00 x 7.00" (178 x 178mm) HOUSING

6.57 x 6.57" (167 x 167MM) VIEWABLE AREA



FEATURES

- ◆ High Luminance
- ◆ XGA Wide View Angle
- ◆ On-Screen Display Control
- ◆ PC Video Interface
- ◆ Hi-Intensity LED Backlight
- ◆ NVIS Option
- ◆ Multiple Bezel Options for User-Specific Applications

The A320 PFD Simulation Color Display from MDI is adaptable for use in a variety of simulator applications on both commercial and military platforms. The unit is ideally suited for new flight simulator applications using the A320 PFD format. It's also an ideal replacement and/or upgrade in simulators using obsolete CRT based and avionic instruments. In each case, it provides a cost-effective, technically efficient solution to your simulator display requirements. Adapters for various bezel and video-input options allow use of the display on numerous platforms. While the standard configuration is powered from a 28VDC source, other DC and AC power options are available. The experienced Multichip team is ready to assist with the development of your application-specific Statement of Work.

MODEL TYPE	PART NUMBER	POWER	DESCRIPTION
MDI-A320 PFD Gray	0903-167167-01	28VDC	Gray
MDI-A320 PFD Black	0903-167167-02	28VDC	Black
MDI-A320 PFD Brown	0903-167167-03	28VDC	Brown

MDI

3395 W. Cheyenne Ave. Unit 111
North Las Vegas, NV 89032 USA

Phone: (702) 294-0111

Fax: (702) 567-0111

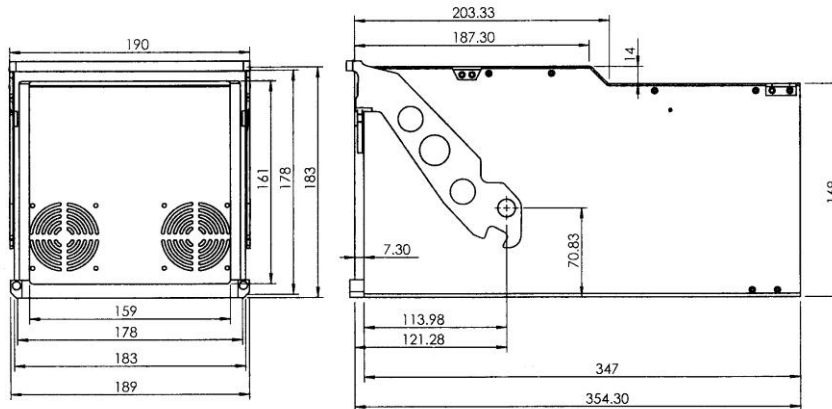
www.mdisplay.com

A320 PFD SIMULATION COLOR DISPLAY

7.00 x 7.00" (178 x 178mm) HOUSING

6.57 x 6.57" (167 x 167mm) VIEWABLE AREA

OPTICAL	
Viewable Area	167 x 167mm (6.57" (H) x 6.57" (V))
Resolution	768 x 768 Color Groups
Pixel pitch	0.240 x 0.240mm (9.5 mils)
Pixel format	RGB Stripe
Display mode	Transmissive (loss of sync or power drives display to a black field)
Viewing angle,	
Horizontal	± 80°
Vertical	+80°, -80°
Color Capacity	16,777,216 colors
Luminance	0.5 to 100 fL
Dimming Ratio	0 to 100 %
Contrast Ratio (CR)	500 typ.
POWER REQUIREMENTS	
Supply Voltage	28VDC
Supply Current Required	2.5 A (max)
Optional Power source	+12VDC or 115 VAC, 60 Hz
Max. Power Consumption	100 W
ELECTRONIC INTERFACE	
Video Input	XGA; Standard PC Monitor Signal
RS-232 (Optional)	Controls video Menu items except backlight brightness
PHYSICAL	
Temperature — Operating	0 to +55°C (+32° to +131° F)
— Storage	-20°C to +60°C (-4° to +140° F)
Ambient Humidity	10% to 90% RH (non-condensing)
Surface Treatment	Hard coating (3H); Anti-glare treatment, front/back; Haze (13%)
MTBF	>10,000 hrs.
Cooling	Forced Air



MDI

3395 W. Cheyenne Ave. Unit 111
North Las Vegas, NV 89032 USA

Phone: (702) 294-0111

Fax: (702) 567-0111

www.mdisplay.com